

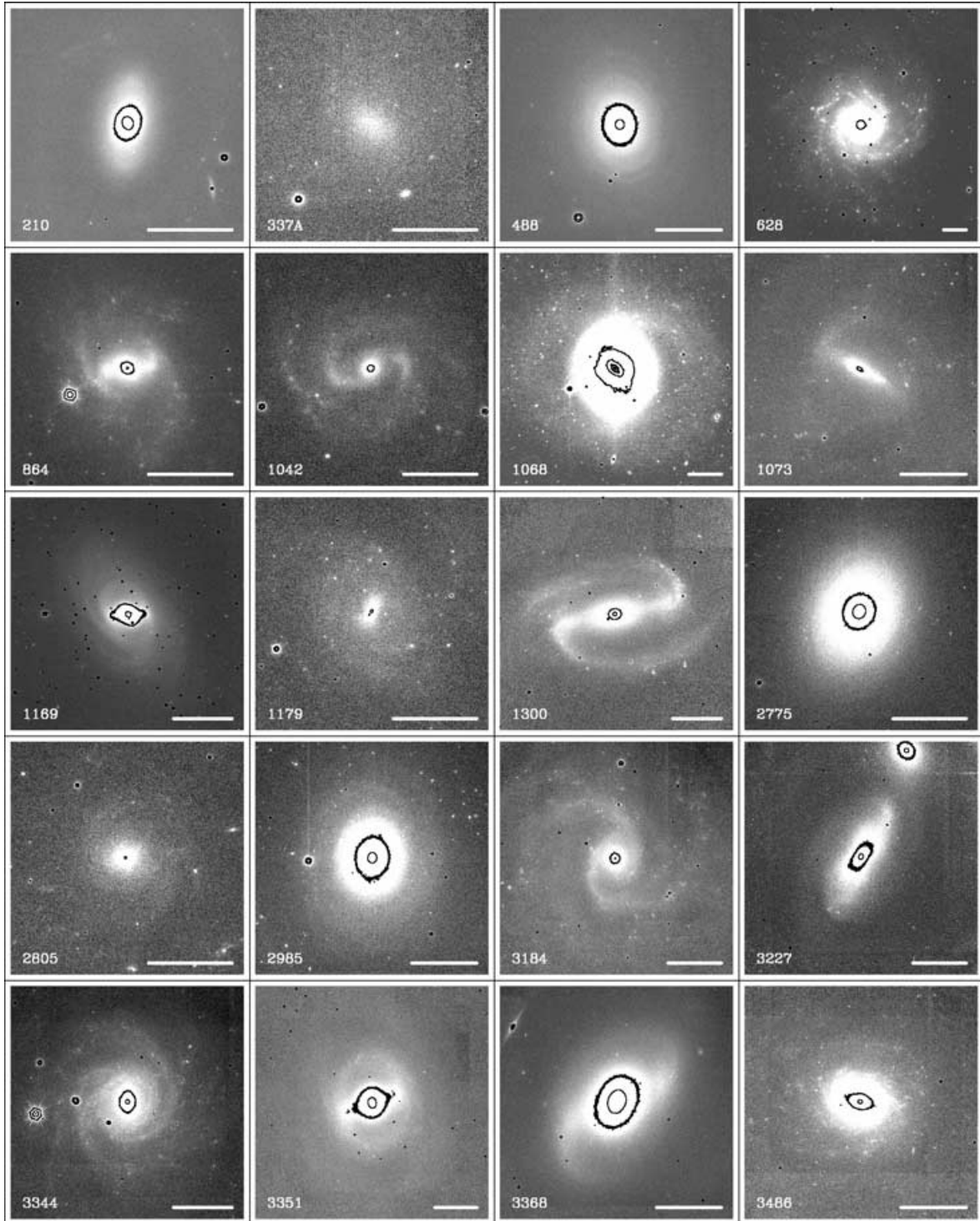
## **Erratum: Structure and star formation in disc galaxies – I. Sample selection and near-infrared imaging**

by J. H. Knapen,<sup>\*</sup> R. S. de Jong, S. Stedman and D. M. Bramich

**Key words:** errata, addenda – galaxies: spiral – galaxies: structure – infrared: galaxies.

The paper ‘Structure and star formation in disc galaxies – I. Sample selection and near-infrared imaging’ was published in Mon. Not. R. Astron. Soc. **344**, 527–543 (2003). A graphics problem compromised the quality of Fig. 1, which is reproduced correctly in this Erratum.

<sup>\*</sup>E-mail: knapen@star.herts.ac.uk



**Figure 1.**  $K_s$  images of all galaxies in the sample. North is up and east is to the left in all images, and the scale of each individual image is indicated by the white bar in the bottom right-hand corner, which represents a length of 1 arcmin. Indicative contours are shown at surface brightness levels of 17 and 15 mag arcsec<sup>-2</sup> for all galaxies, *except* the following, for which contours are shown at 16 and 15 mag arcsec<sup>-2</sup>: NGC 2775, 3368, 4030, 4051, 4254, 4303, 4535, 4548, 4736, 5248, 6384.

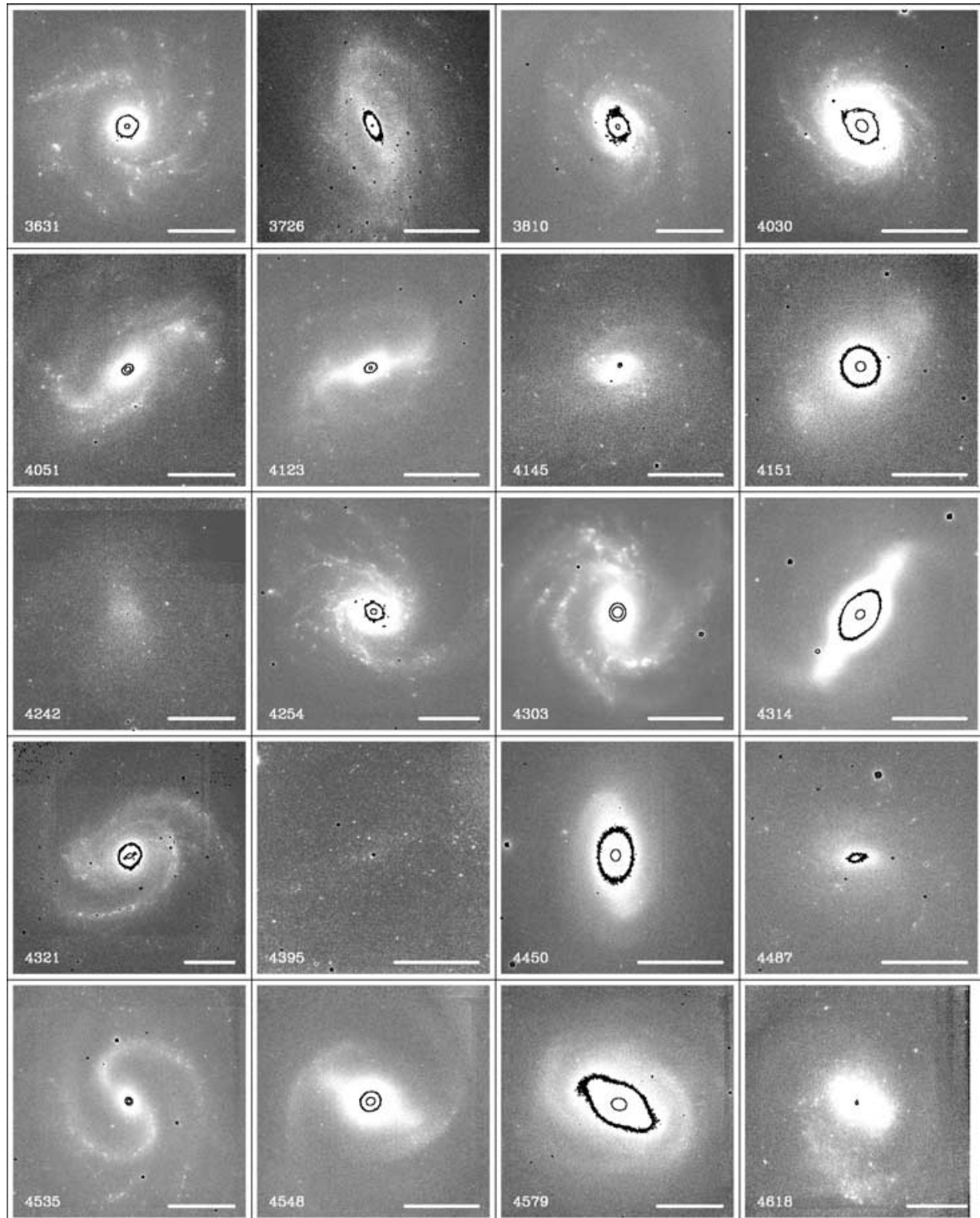
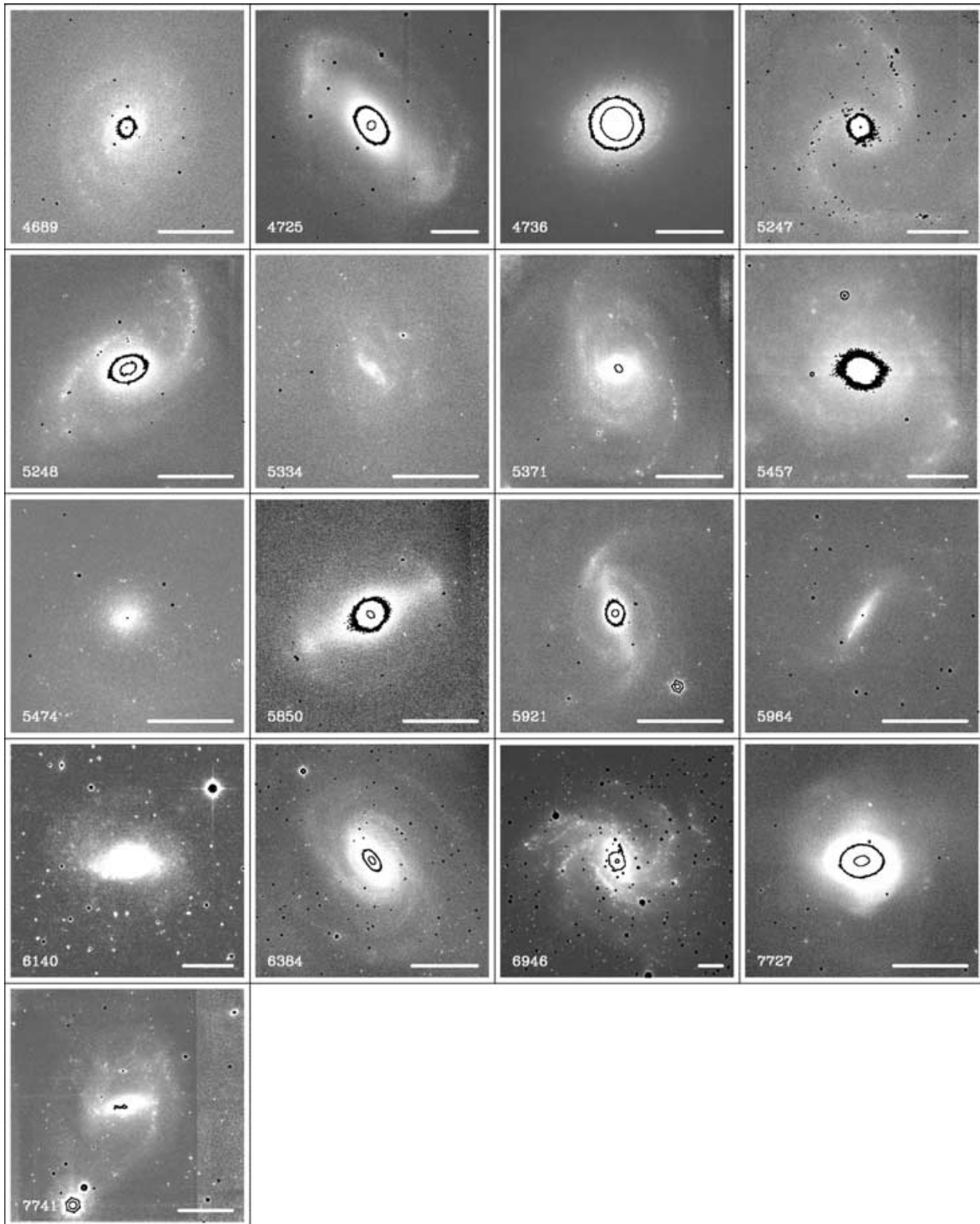


Figure 1 – continued



**Figure 1** – *continued*